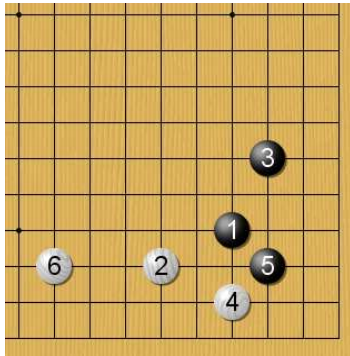
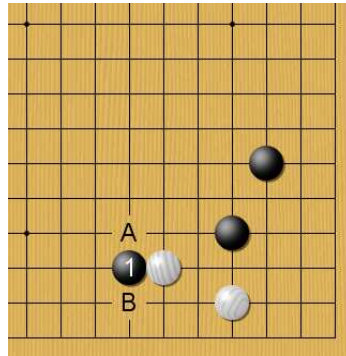


Useful pattern vol.3

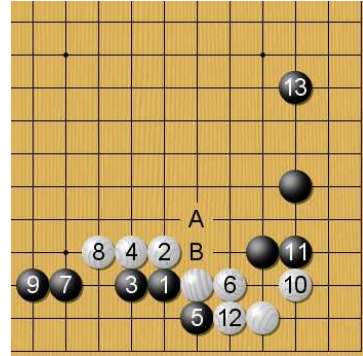


Normal pattern



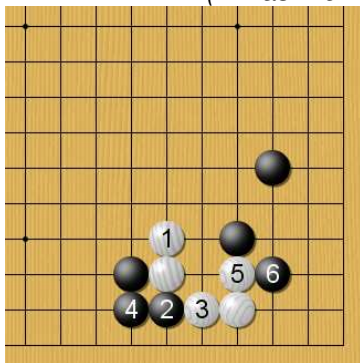
Useful move

(W has A or B two possibilities)

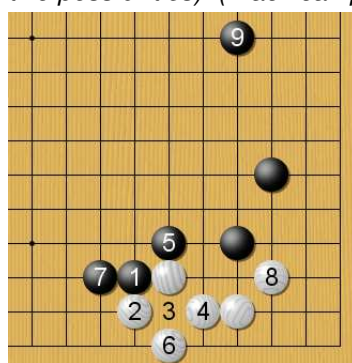


Useful pattern

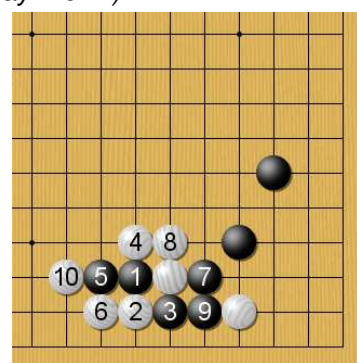
(Black can play A or B)



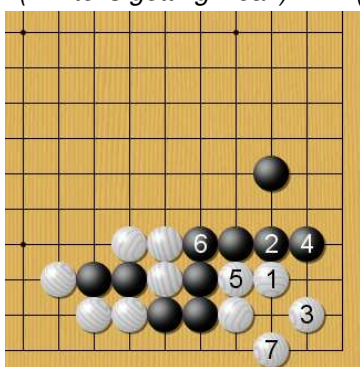
Good for Black
(White is getting weak)



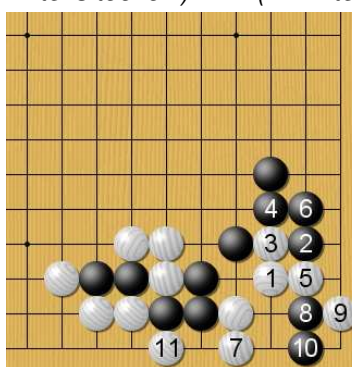
Good for Black
(White is too low)



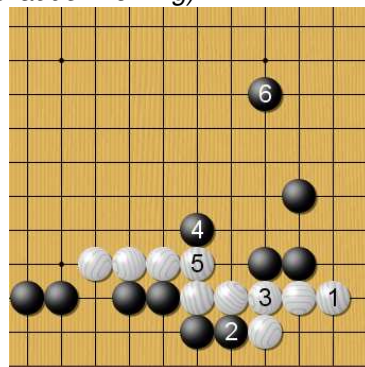
Also pattern
(If White's ladder working)



Corner has mat
(White can lives)



Also possible



Good for Black
(Black's 2 is vital point)

By In seong